

SHIP'S PARTICULARS

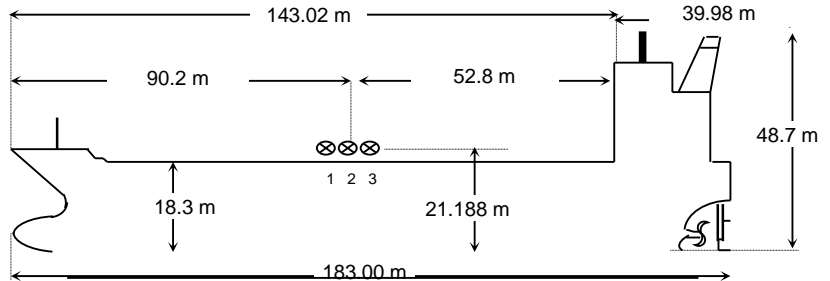
NAME	FPMC 31
CALL SIGN	D5RC4
FLAG	LIBERIA
PORT OF REGISTRY	MONROVIA
OFFICIAL NUMBER	18723
IMO/LLOYDS NUMBER	9831696
CLASS SOCIETY	LR
CLASS NOTATION	LR *100A1 Double Hull Oil and Chemical Tanker, ship type 2, ESP, CSR, LI *IWS SHIPRIGHT (ACS (B), CM) *LMC, UMS, IGS, ECO (BWT, VECS) Descriptive Notes: ShipRight(BWMP(T), SCM, SERS)
P & I CLUB	THE STEAMSHIP MUTUAL MANAGEMENT (BERMUDA) LTD.

KEEL LAID	2018/8/27
LAUNCHED	2018/12/4
DELIVERED	
SHIPYARD	Guangzhou Shipyard International Company Limited(GSI)

SATELLITE COMMUNICATION	
V SAT	INM-FBB, INM-C
E-MAIL	
PHONE	+870 773 912-262
TELEX	463 727 347 463 727 348
MMSI	636 018 723
EX. NAMES	N/A
CS / FLAG	N/A

OWNERS	FPMC 31 MARINE CORP.
OPERATORS	Formosa Plastic Marine Corp.

PRINCIPAL DIMENSIONS	
LOA	183.00 m
LBP	179.60 m
BREADTH (Extreme)	32.0 m
DEPTH (moulded)	18.30 m
HEIGHT (maximum)	48.70 m
BRIDGE FRONT - BOW	143.02 m
BRIDGE FRONT - STERN	39.98 m
BRIDGE FRONT - M'FOLD	52.8 m



TONNAGE	REGD	SUEZ	Panama
NET	14965	26256.45	24690
GROSS	28891	31046.98	
GROSS Reduced (R'n:13495)		N/A	

TANK CAPACITIES (cbm)					
CARGO TANKS (98 %)		F.W Tanks 100%		BLST TKS (100 %)	
1Ws	4765.740	BOILER W.T	64	L.F.P.Tk.	1362.60
2Ws	5566.204	TCFW TK (P)	127.10	U.F.P.Tk.	250.20
3Ws	8534.624	TCFW TK (S)	78.50	WBT 1Ws	2293.40
4Ws	8688.288	C.W.T.	34.00	WBT 2Ws	2015.60
5Ws	8684.074	FW General (P)	444.40	WBT 3Ws	2849.20
6Ws	6017.200	FW General (S)	394.10	WBT4Ws	2797.40
7Ws	5605.992	DRINKING W.T.	52.10	WBT5Ws	2790.50
Slops-P	2298.492			WBT6Ws	2635.90
Slops-S	2563.876			WBT7Ws	2684.80
TOTAL	52724.490	TOTAL	1194.20	TOTAL	19679.60

LOAD LINE INFORMATION	FREEBOARD	DRAFT	DWT
TROPICAL	4.729	13.577	51,222.50
SUMMER	5.006	13.300	49,731.20
WINTER	5.283	13.023	48,244.20
SEG. BALLAST CONDN	10.94	7.366	19,563.00
DWT WITH SBT ONLY			
FWA @ Summer draft			
TPC @ Summer draft		53.80	

OTHER DETAILS			
H. Level Alarm	95%	Independent	PANASIA
Overfill Alarm	98%		

MACHINERY / PROPELLER / RUDDER	
MAIN ENGINE	MAN B&W ENGINE 6G50MEC9.5 HP SCR
M.C.R.	7585kW @86.1 RPM
N.C.R. (75%)	5689 KW @ 78.2RPM
MAX CRITICAL RANGE	41-50 RPM
AUX. BOILER	Miura, 1x HB-20000kg/h
GENERATOR (3 sets)	YANMAR 6EY22ALWS, 1100KWx900rpm
EMER D.G.	CUMMINS, 6CT8.3-D(M), 188KW
PROPELLER	4 Blade FPP, Dia 7100mm
RUDDER	Semi-Spade, 35°
STEERING GEAR	Rotary Vane, RV 1050-3
FW GENERATOR CAP	ALFA LAVAL, 15Ts/Day
BOW THRUSTER	N.A

BUNKER TANKS	
1 FOT (P)	324.40 m3
1 FOT (S)	298.80 m3
2 FOT	632.20 m3
2 FO (S)in	
2FO(S)out	
FO SETT	34.60 m3
FO SER	34.60 m3
LSFO sett	
LSFO Serv	
FO OFLOW	
TOTAL	1324.60 m3
MGO	458.50 m3
MOG Srv 1	18.50 m3
MOG Srv 2	18.50 m3
TOTAL	495.50 m3

WINCHES / WINDLASS / ROPES / EMERGENCY TOWING			
	FWD	AFT	PARTICULARS
WINCHES	6 (d.drm)	6 (d.drm)	
ROPE	6	6	220mtr,
Winch BHC			
WINDLASS	2	NIL	
FIRE WIRE	1	1	Owner supply
ANCHOR	2	0	Stbd 12 shackles / Port 11 shackles
EMG. TOWING	YES	YES	Anchor chain: 73 mm
	1	1	

CARGO AND BALLAST PUMPING SYSTEM				
MAIN PUMPS	NO.	CAPACITY	HEAD	RPM
CARGO Framo	14	600m3/hr	120mlc	
CARGO Framo	2	300m3/hr	120mlc	
CARGO Framo	1	70m3/hr	60mlc	
BALLAST Framo	2	700m3/hr	35mlc	
TANK CLNG Framo	1	160m3/hr	110 mlc	

MANIFOLD ARRANGEMENT	
Distance of cargo manifold to cargo manifold	1005mm
Distance of cargo manifold to vpr. return manifold	4020mm
Distance of top of rail to centre of manifold	2570mm
Distance of manifold to ship side	4600 mm
Distance of manifold from keel	20.4 m

CARGO HOSE CRANES	
1 Set x 10 Ts	

LIFE BOATS	
1x 25 Persons	
Type: FRP	
TOTALLY ENCLOSED TYPE	

FIRE FIGHTING SYSTEM	
E/RM	CO2, HYPER MIST
PUMP ROOM	CO2
CARGO/DK AREA	LOW EXPANSION FOAM

IG / VAPOR EMISSION / VENTING	
IG BLOWER CAPACITY	4500 cum/Hr.
P/V VALVE PR./ VAC. SETTING	2200/ -350mmwg

Min Bow Drft:	6.465m
Blst Drft:	F:6.67m, A:8.28 m
MARPOL Trim:	1.53 m
Propeller Immer.:	7.10m