

# SHIP'S PARTICULARS

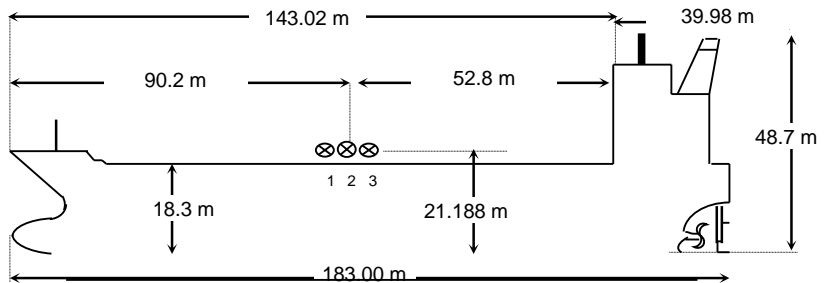
NAME	FPMC 32
CALL SIGN	D5RC5
FLAG	LIBERIA
PORT OF REGISTRY	MONROVIA
OFFICIAL NUMBER	18724
IMO/LLOYDS NUMBER	9831701
CLASS SOCIETY	LR
CLASS NOTATION	LR *100A1 Double Hull Oil and Chemical Tanker, ship type 2, ESP, CSR, LI *IWS SHIPRIGHT (ACS (B), CM) *LMC, UMS, IGS, ECO (BWT, VECS) Descriptive Notes: ShipRight(BWMP(T), SCM, SERS)
P & I CLUB	THE STEAMSHIP MUTUAL MANAGEMENT (BERMUDA) LTD.

KEEL LAID	2018/8/27
LAUNCHED	2018/12/4
DELIVERED	
SHIPYARD	Guangzhou Shipyard International Company Limited(GSI)

SATELLITE COMMUNICATION	
V SAT	INM-FBB, INM-C
E-MAIL	
PHONE	+870 773 912 082
INM SAT-C	463727588 463727589
MMSI	6360 18724
EX. NAMES	N/A
CS / FLAG	N/A

OWNERS	FPMC 32 MARINE CORP.
OPERATORS	Formosa Plastic Marine Corp.

PRINCIPAL DIMENSIONS	
LOA	183.00 m
LBP	179.58 m
BREADTH (Extreme)	32.0 m
DEPTH (moulded)	18.30 m
HEIGHT (maximum)	48.70 m
BRIDGE FRONT - BOW	143.02 m
BRIDGE FRONT - STERN	39.98 m
BRIDGE FRONT - M'FOLD	52.8 m



TONNAGE	REGD	SUEZ	Panama
NET	14953	26256.45	24690
GROSS	28891	31046.98	
GROSS Reduced (R'n:13495)		N/A	

TANK CAPACITIES ( cbm )					
CARGO TANKS (98 %)		F.W Tanks 100%		BLST TKS (100 %)	
1Ws	4741.926	BOILER W.T	62.7	FPT(U)&(L)	1580.60
2Ws	5538.372	TCFW TK (P)	435.50	WBT 1Ws	2247.50
3Ws	8491.896	TCFW TK (S)	386.30	WBT 2Ws	1975.30
4Ws	8644.776	C.W.T.	33.30	WBT 3Ws	2792.30
5Ws	8640.758	FW General (P)	124.60	WBT 4Ws	2741.40
6Ws	5987.016	FW General (S)	76.90	WBT 5Ws	2734.70
7Ws	5577.964	DRINKING W.T.	51.10	WBT 6Ws	2583.10
Slops-P	2286.928			WBT 7Ws	2631.30
Slops-S	2551.038			APT Ws	754.30
<b>TOTAL</b>	<b>52460.674</b>	<b>TOTAL</b>	<b>1170.40</b>	<b>TOTAL</b>	<b>20040.50</b>
OTHER DETAILS					
H. Level Alarm	95%	Independent	MOSASINO		
Overfill Alarm	98%				

LOAD LINE INFORMATION	FREEBOARD	DRAFT	DWT
TROPICAL			
SUMMER	5.014	13.300	49,660.00
WINTER			
SEG. BALLAST CONDND	10.94	7.366	19,563.00
DWT WITH SBT ONLY			
FWA @ Summer draft			
TPC @ Summer draft		53.80	

MACHINERY / PROPELLER / RUDDER	
MAIN ENGINE	MAN B&W ENGINE 6G50MEC9.5 HP SCR
M.C.R.	7585kW @86.1 RPM
N.C.R. (75%)	5689 KW @ 78.2RPM
MAX CRITICAL RANGE	42-50 RPM
AUX. BOILER	Miura, 1x HB-20000kg/h
GENERATOR (3 sets)	YANMAR 6EY22ALWS, 1180KWx900rpm
EMER D.G.	CUMMINS, 6CT8.3-D(M), 188KW
PROPELLER	4 Blade FPP, Dia 7100mm
RUDDER	Semi-Spade, 35°
STEERING GEAR	Rotary Vane, RV 1050-3
FW GENERATOR CAP	ALFA LAVAL, 15Ts/Day
BOW THRUSTER	N.A

BUNKER TANKS	
1 FOT (P)	317.90 m3
1 FOT (S)	292.80 m3
2 FOT	619.50 m3
2 FO (S)in	
2FO(S)out	
FO SETT	34.00 m3
FO SER	34.00 m3
LSFO sett	
LSFO Serv	
FO OFLOW	
<b>TOTAL</b>	<b>1298.20 m3</b>
MGO	449.30 m3
MOG Srv 1	18.20 m3
MOG Srv 2	18.20 m3
<b>TOTAL</b>	<b>485.70 m3</b>

WINCHES / WINDLASS / ROPES / EMERGENCY TOWING			
	FWD	AFT	PARTICULARS
WINCHES	6 (d.drm)	6 (d.drm)	
ROPE	6	6	200
Winch BHC	6	6	44.1mt
WINDLASS	2	NIL	
FIRE WIRE	1	1	Owner supply
ANCHOR	2	0	Stbd 12 shackles / Port 11 shackles
EMG. TOWING	YES	YES	Anchor chain: 73 mm
	1	1	

CARGO AND BALLAST PUMPING SYSTEM				
MAIN PUMPS	NO.	CAPACITY	HEAD	RPM
CARGO Framo	14	600m3/hr	120mlc	
CARGO Framo	2	300m3/hr	120mlc	
BALLAST Framo	2	700m3/hr	35mlc	
TANK CLNG Framo	1	160m3/hr	110 mlc	

MANIFOLD ARRANGEMENT	
Distance of cargo manifold to cargo manifold	2010mm
Distance of cargo manifold to vpr. return manifold	4020mm
Distance of top of rail to centre of manifold	895mm
Distance of manifold to ship side	4600 mm
Distance of manifold from keel	20.4 m

CARGO HOSE CRANES	
1 Set x 10 Ts	

LIFE BOATS	
1x 25 Persons	
Type: FRP	
TOTALLY ENCLOSED TYPE	

FIRE FIGHTING SYSTEM	
E/RM	CO2, HYPER MIST
PUMP ROOM	CO2
CARGO/DK AREA	LOW EXPANSION FOAM

IG / VAPOR EMISSION / VENTING	
IG BLOWER CAPACITY	4500 cum/Hr.
P/V VALVE PR./ VAC. SETTING	2200/ -350mmwg

Min Bow Drft:	6.465m
Blst Drft:	F6.50m, A 8.28 m
MARPOL Trim:	1.53 m
Propeller Immer.:	7.10m